





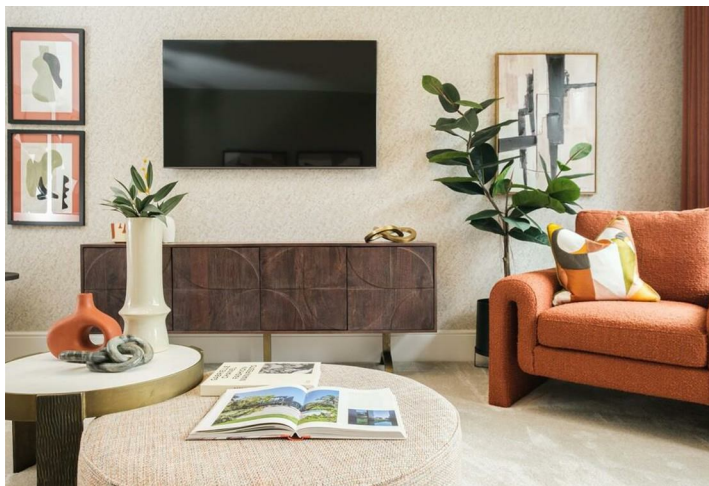
****LAST PLOT REMAINING ****

Nestled in the charming area of Pirelli Close, Castle Donington, Derbyshire, this exquisite new build home, known as The Warwick, presents an exceptional opportunity for modern living. With three well-proportioned bedrooms and two contemporary bathrooms, this property is designed to cater to the needs of families and professionals alike.

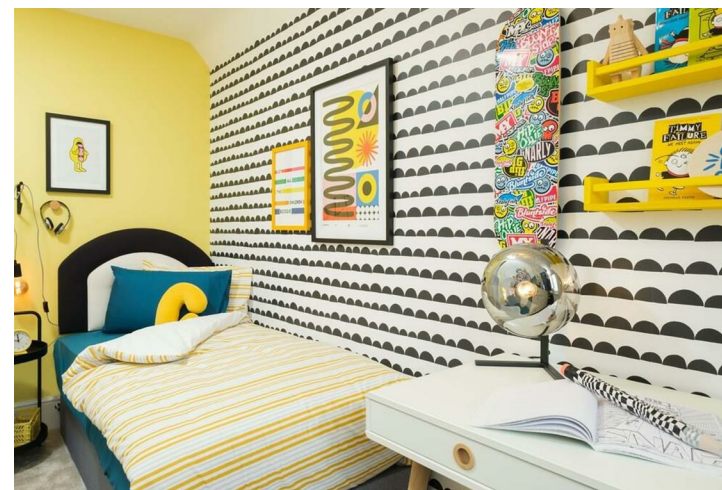
As you enter, you are greeted by a spacious lounge that exudes comfort and style, perfect for relaxation or entertaining guests. The heart of the home is undoubtedly the extensive kitchen and dining area, which boasts a modern design and ample space for family meals or social gatherings. The large windows throughout the property allow natural light to flood in, creating a bright and airy atmosphere that enhances the sense of space.

The Warwick has been thoughtfully designed to ensure that each room flows seamlessly into the next, with a layout that maximises both functionality and aesthetic appeal. The connection between the indoor and outdoor spaces is particularly noteworthy, as it invites the beauty of the surrounding environment into your home.

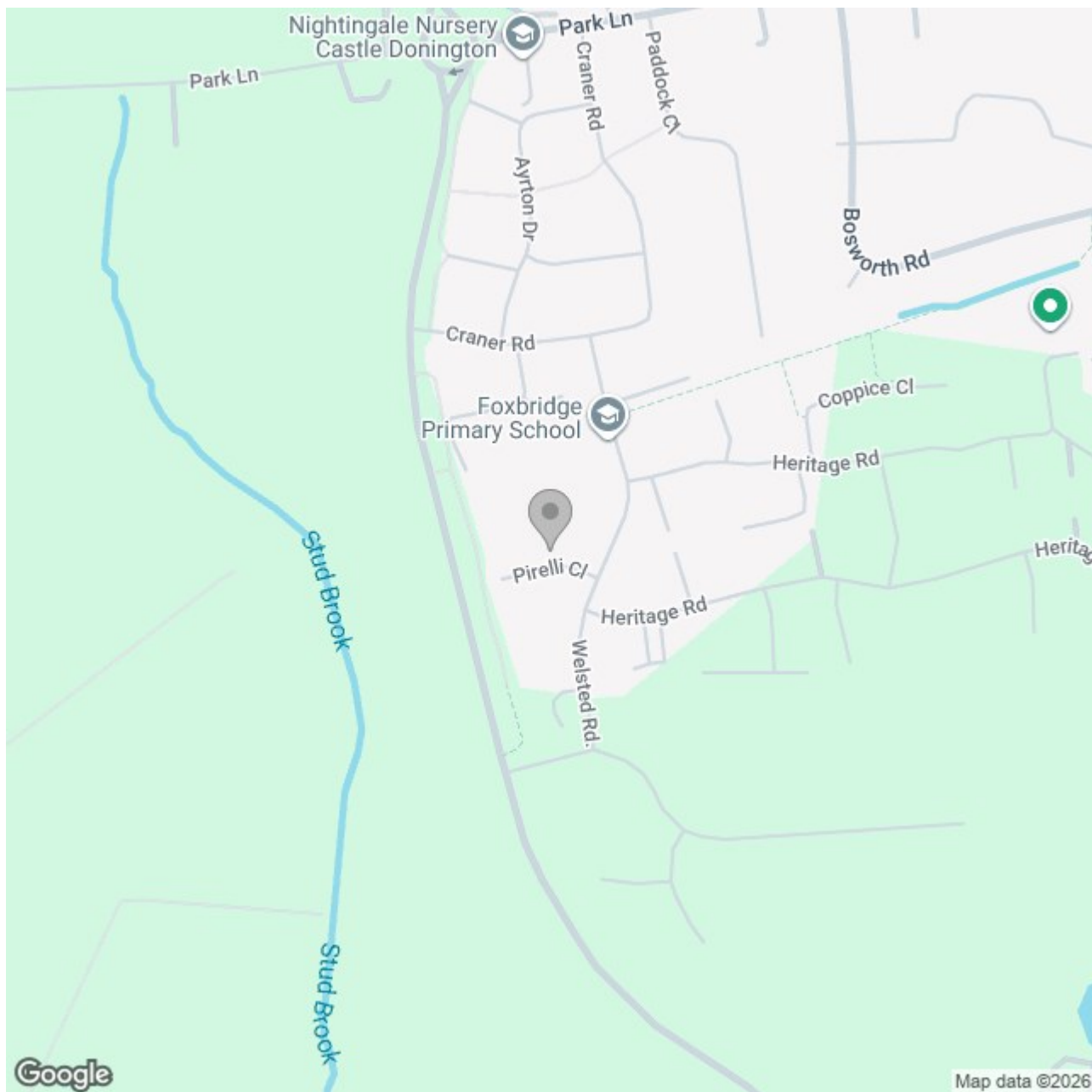
This property is not just a house; it is a lifestyle choice, offering a perfect blend of comfort, elegance, and modern convenience. With its prime location.



ABODE
SALES & LETTINGS







Energy Efficiency Rating

	Current	Potential
Very energy efficient - lower running costs		
(92 plus) A		
(81-91) B		
(69-80) C		
(55-68) D		
(39-54) E		
(21-38) F		
(1-20) G		
Not energy efficient - higher running costs		
England & Wales	EU Directive 2002/91/EC 